



ATTENTION ART EDITORS!

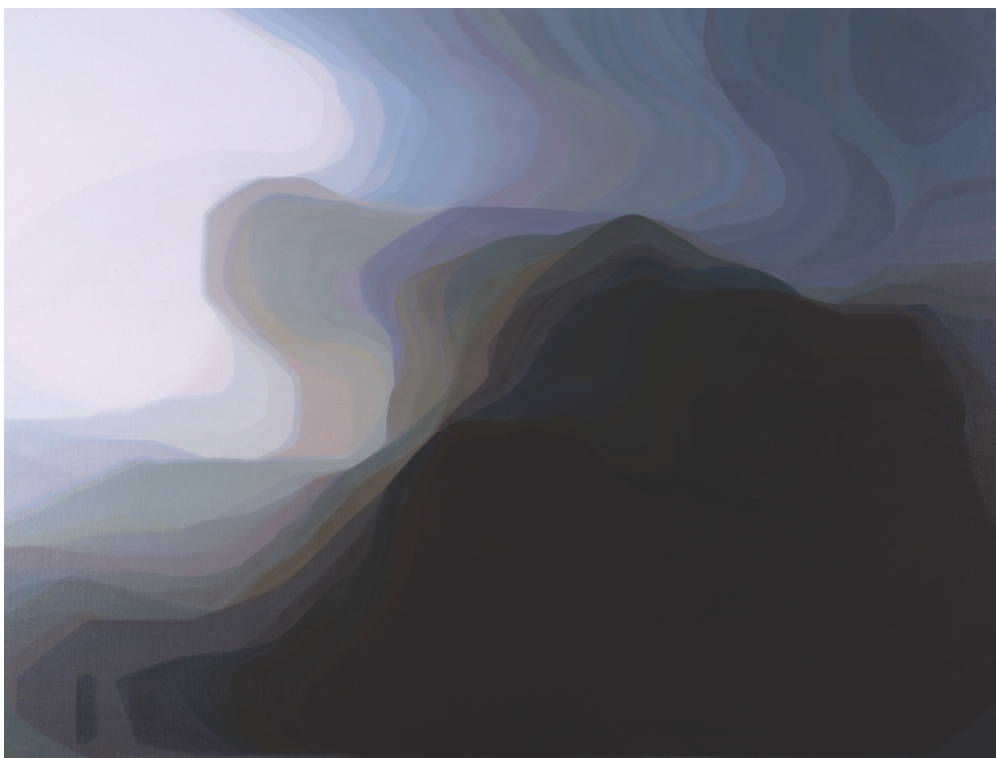
10 CHANCERY LANE GALLERY PRESENTS

WHISPER

Opening: 16 October, Thursday, 5 – 8 pm

10 Chancery Lane Gallery, Hong Kong

Exhibition Period: 16 October – 15 November 2025



John Young, *Naive & Sentimental Painting III*, 2006, Oil on linen, 146.5 x 190 cm

10 Chancery Lane Gallery presents “**WHISPER**” a group exhibition that brings together ten artists, **Chung Sanghwa, Ho Fan, Huang Rui, Lewis Lee, Eilly Li, Laurent Martin “Lo”, Christine Nguyen, Pan Jian, Wang Keping and John Young**. “**WHISPER**” aims to create an immersive space that invites viewers to experience a sense of calm and introspection through the artworks of ten diverse artists. Each artist interprets the theme of serenity in unique ways, using various mediums to evoke feelings of tranquillity, stillness, and connection to the inner self and the surrounding world.

Artists Christine Nguyen, Ho Fan, Pan Jian and Wang Keping find quietude in nature capturing moments of stillness:

Vietnamese-American artist **Christine Nguyen**'s photo-based works draw upon the imagery of nature, the sciences, and the cosmos but it is not limited to a conventional reading of these realms. It imagines that the depths of the ocean reach into outer space, that through an organic prism, vision can fluctuate between the micro- and macroscopic. Her practice is devoted to the natural world and its curiosities. *"It has been my inspiration and a place that I find meditative and complex but also mysterious. It has allowed me to continuously know more about the world we live in."* Hong Kong master photographer

Ho Fan photographed Hong Kong in the mid-20th century. Ho's sail photo is a striking example of his ability to capture the essence of life at sea, blending natural elements with human activity. In this image, the sailboat often becomes a focal point, set against a backdrop of dramatic skies or serene waters. Through this photo, Ho Fan not only showcases his technical prowess but also his deep emotional connection to the landscapes he loved to capture.

Chinese artist **Pan Jian**'s forest and water paintings are reflective of his sensitivity and connectedness to emotive hidden landscapes he seeks and the intense feelings they elude. The way Pan Jian composes his paintings often creates a sense of movement, mirroring the ebb and flow of his emotions. Curved lines, swirling patterns, and dynamic brushstrokes can suggest a narrative of one's own interpretation, conveying feelings of joy, sadness, or contemplation as the viewer's eye travels through the piece.

Wang Keping's sculptures have always portrayed his deep connection to the tree from which the wood itself is expressed through his forms. He often confesses that the wood is like the body, in that it has soft and hard parts that push his chisels in a collaborative way seeking his creations. Using yew wood the circular form is knotted and robust from the natural contours of the bulbous trunk giving a unique character to the sculpture by preserving the essence of the tree in all its bold and subtle forms.

It is through minimalism and simplicity that Korean artist Chung Sanghwa and French artist Laurent Martin "Lo" explore their works:

Chung Sanghwa was part of the Dansaekhwa movement in Korea. This group of artists had a deep connection to nature and drew inspiration from natural elements, incorporating organic forms, colors, and textures into their work. This reflects a broader cultural appreciation for the beauty and transience of the natural world. Chung has often mentioned the meditative aspects of his painting process, emphasizing how the act of creation serves as a form of introspection and mindfulness. He views painting as a meditative practice, akin to meditation itself. By focusing intently on each stroke and layer, he creates a space for contemplation. This focus helps him to clear his mind and connect with his inner thoughts and feelings. The work on view is unique in his practice where it features earthy brown, which is rarely found in his oeuvres.

Laurent Martin “Lo’s” artistic philosophy is his fascination with bamboo and its inherent qualities. He delves into the material's unique attributes of balance, lightness, and flexibility, seeking to push its boundaries and discover new possibilities. Through his expertise, he unveils the mathematics, poetry, and sensuality inherent in bamboo, harnessing its potential to create captivating sculptural forms.

Huang Rui and John Young find their whisper through abstraction:

Huang Rui is a visionary artist whose abstract creations draw inspiration from Taoism and the emotive power of music, particularly Antonín Dvořák’s opera Rusalka. His work reflects the essence of nature and the fluidity of existence, inviting viewers to connect with themes of harmony, balance, and the beauty of impermanence. Just as music can pierce the heart with profound emotion, Huang’s art stirs the soul, creating a dialogue between visual art and melody that invites contemplation on the interconnectedness of life, art, and the universe.

Hong Kong-Australian artist **John Young**’s abstract paintings of mellowed and rich hues contain a palpable sense of melancholy and introspection often reflecting the complexities of the diasporic experience. This emotional depth invites viewers to connect with the themes of belonging and identity. Nature plays a significant role in Young's paintings, often depicted in a way that emphasizes its beauty and fragility. His landscapes serve not only as picturesque scenes but also as a commentary on environmental issues and the relationship between humanity and the natural world.

Two Young Hong Kong artists Eilly Li and Lewis Lee will also be featured:

Eilly Li uses her art practices to present sentimental emotions and moments of serenity amid uncertainties and turbulences in life. Focusing on the minute details and fleeting moments in life, she draws inspiration from her photography, choosing the immersive oil painting process to revisit the flowing sceneries and capture the transience of life. Inspired by literature, she adopts the ambiguity of metaphor to reiterate the unspoken meaning and ambiance of her art-making.

Lewis Lee is in the process of creating a new painting inspired by the theme of Whisper and will be released the day of the opening.

WHISPER is more than just an exhibition; it seeks to create a sanctuary of calm, prompting reflection and connection in a bustling world. Through the diverse perspectives of these ten artists, visitors will leave with a renewed sense of peace and inspiration.

ABOUT 10 CHANCERY LANE GALLERY

Established in 2001, when Hong Kong's art scene was burgeoning, Katie de Tilly started 10 Chancery Lane Gallery. Along the back wall of the, then running, Victoria Prison, now the buzzing Tai Kwun Heritage and Cultural site, the little walking lane opened into a gallery specializing in contemporary art from the Asia-Pacific. Over the past 24 years, 10 Chancery Lane has worked with some of the region's great artists, curators, and museums. The gallery's motto still stands: *"We are committed to giving a breath of fresh air to the Hong Kong art scene by bringing works that can expand horizons, open minds, and view the world, and life in general, through varying eyes, ideas, and souls. Art is not just decoration for our walls but a connection with our deep inner selves and the world around us."*

WHISPER

Venue: 10 Chancery Lane Gallery

Opening Reception: 16 October, Thursday, 5-8pm

A Group Exhibition featuring works by Artists: Chung Sanghwa, Ho Fan, Huang Rui, Eilly Li, Lewis Lee, Laurent Martin "Lo", Christine Nguyen, Pan Jian, Wang Keping, John Young

For Press Enquiries and to arrange interviews, please contact Ellen Zhuang:

ellen@10chancerylanegallery.com or +852 2810 0065

or mobile / whatsapp +852 96219572 or WeChat ID: manor_Z

High resolution images available on request

